

Longwrap Maflowrap

Tank Chime System Application Guidelines

1.0 SCOPE

This document contains general instructions and recommended practices for the application of the Maflowrap FBT system to tank chime assemblies. For assistance in coating selection, surface preparation, application or inspection, please contact a Chase Representative.

2.0 MATERIALS

2.1 Maflowrap FBT - A 1.2mm, cold applied, fabric backed bitumen tape used as an outer-wrap over Longwrap and Maflowrap products to provide a paintable, well adhered, non-staining surface.

2.2 Maflowrap Primer B400 - A quick drying adhesive used with all Maflowrap tapes. Can be used for both Temperate and Tropical products.

2.3 Longwrap Petrolatum Paste - A VOC free, cold applied, wax based primer designed to wet out the surface prior to application of all grades of Longwrap Petrolatum Tape and LD Mastic.

2.4 Longwrap LD Mastic - A VOC free, cold applied, wax based putty filled with expanded polystyrene beads that is designed to fill gaps and irregular contours prior to the application of other Longwrap Petrolatum products. A coat of Longwrap Petrolatum Paste is required prior to application.

2.5 Longwrap Petrolatum Tape - A 1.15mm VOC free, cold applied, wax based tape designed to protect piping and metal structures from damage and deterioration caused by corrosion. The Temperate grade provides protection at operating temperatures up to 55°C (133°F) and the Tropical grade provides protection at operating temperatures up to 70°C (158°F).

2.6 Industrial coating top coat - Liquid applied coating to provide desired color and finish. Maflowrap FBT is designed to accept a variety of different liquid applied coatings. It is recommended to test all coatings with Maflowrap FBT prior to use to ensure compatibility.

3.0 SURFACE PREPARATION

3.1 All substances that will impede bond or otherwise be detrimental to the performance of the coating system must be removed prior to the coating application. This includes all loose surface material, rust, dirt, dust, moisture, grease, oil, sharp edges, burrs, mill scale, welding splatter and shop lacquer. These materials shall be removed by using one or more of the following methods appropriate to the type of contaminant;

3.1.1 Solvent cleaning in accordance with SSPC SP1,

3.1.2 An appropriate high detergent cleaning followed by water wash or steam rinse,

3.1.3 Scraping, wire brushing and or wiping down with clean rags. All cleaning rags should be lint free so as to not leave contamination fibres on the pipe surface

3.2 All surface imperfections such as slivers, scabs, weld spatter and other protrusions etc. shall be removed or made smooth by wire brushing and / or grinding.

3.3 If it is not feasible to prepare the pipe surface by abrasive blast cleaning then mechanical wire brushing using a power tool, in accordance with SSPC-SP11, may be used.

3.4 The coating must be applied as soon as practical after cleaning to keep dirt and rust bloom from re-contaminating the pipe surface.

4.0 APPLICATION

4.1 Maflowrap Primer B400

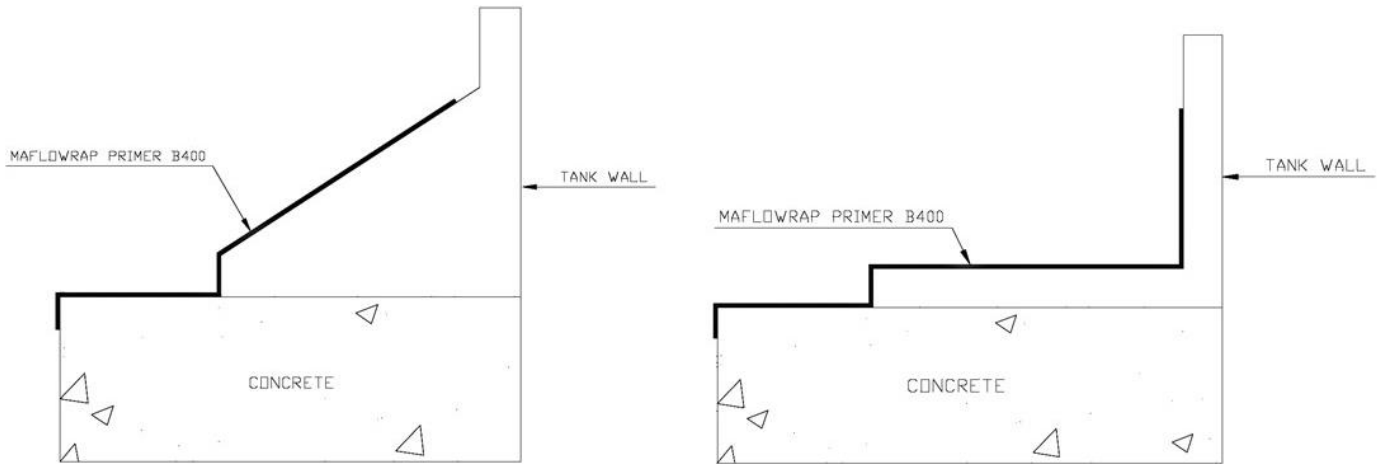
4.1.1 Stir the primer well before application. When not in use keep the containers tightly sealed.

4.1.2 Apply primer by brush, roller or spray in an even coat over the entire surface that will receive Maflowrap FBT tape. Ensure surface is free from runs, drips and bare spots.

4.1.3 The primer coat should not be less than 25 microns Dry Film Thickness (DFT) and not greater than 50 microns DFT.

4.1.4 The primed surface shall be free from any foreign substances such as sand, dirt, grease or oil. Any contaminant should be removed and the affected area re-primed.

4.1.5 The primed surface should then be allowed to dry thoroughly before any attempt is made to apply subsequent coatings or tapes. The primed surface should remain clean and dust free immediately before the application of subsequent coatings or tapes.



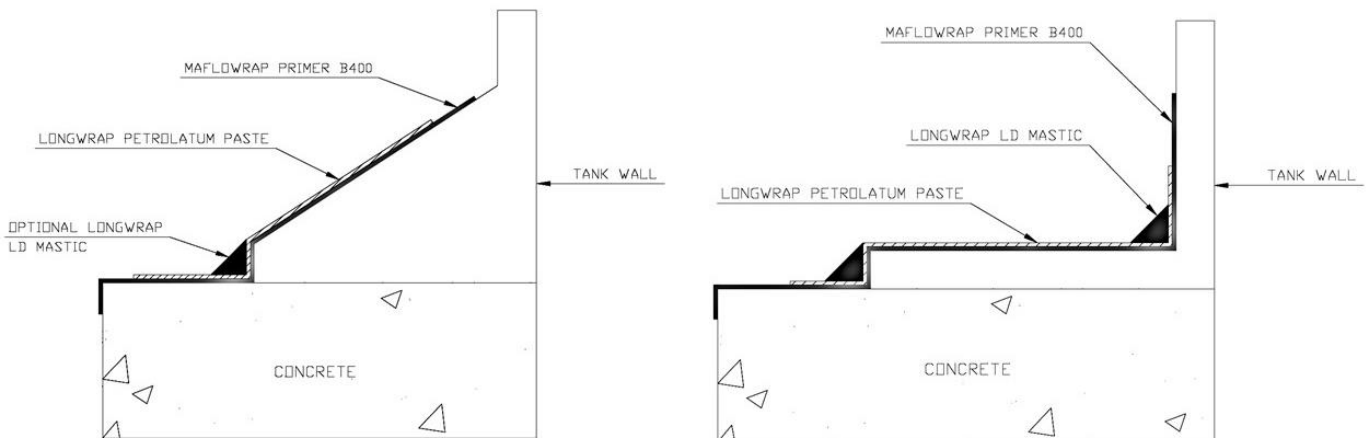
4.2 Longwrap Petrolatum Paste and LD Mastic

4.2.1 Petrolatum Paste is required prior to using all Longwrap petrolatum products

4.2.2 Using a brush or gloved hand, apply a coat of Petrolatum Paste that has a minimum thickness of 100 microns. Be sure that the entire surface that will receive petrolatum coatings and tape is encapsulated.

Petrolatum Paste can negatively affect the adhesion of bitumen adhesives to concrete and metal surfaces, so care should be taken to avoid spreading beyond the area to be coated with other petrolatum products.

4.2.3 For large cants and irregular areas where the application of tape may be difficult, LD Mastic can be used to create a surface that will be easier to coat. The LD Mastic should be applied by hand and molded to the surface of the substrate. LD Mastic should only be applied to areas already coated with Petrolatum Paste.



4.3 Longwrap Petrolatum Tape

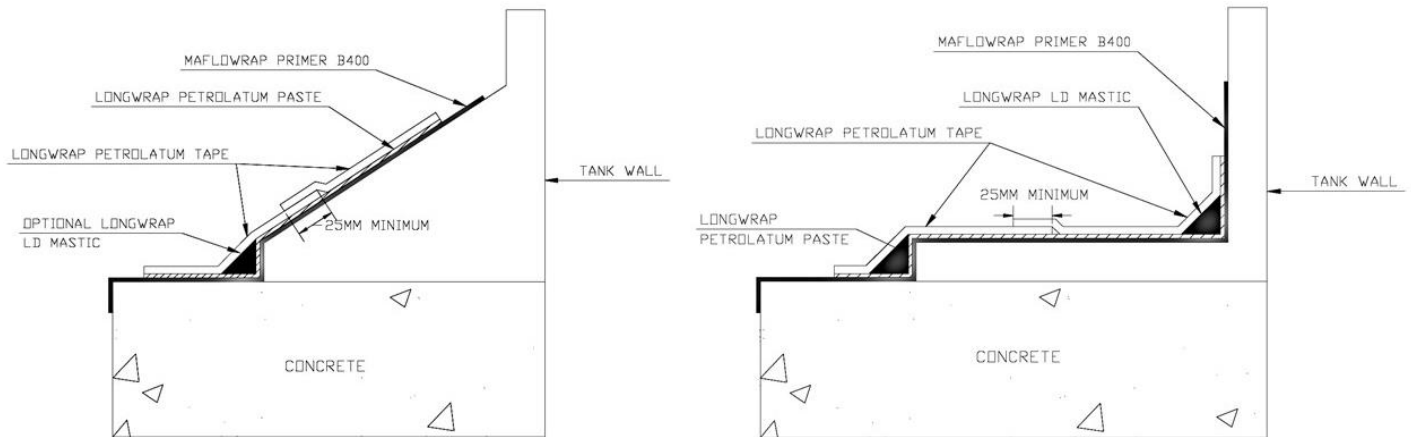
4.3.1 Tape must be applied with sufficient pressure to conform to the surface.

4.3.2 The overlap between pieces of tape should be a minimum of 25mm (1”).

4.3.3 The tape should extend a minimum of 50mm (2”) in each direction past the metal-to-concrete joint of the tank chime.

4.3.4 When applying more than one layer of Petrolatum Tape, all overlaps should be shingled with piece higher up the tank lapping on top of the lower wrap of tape. This can be achieved by always starting at the bottom and wrapping upwards.

4.3.5 After a section is wrapped, the tape should be worked by hand to smooth out any wrinkles and seal the overlaps.



4.4 Maflowrap FBT

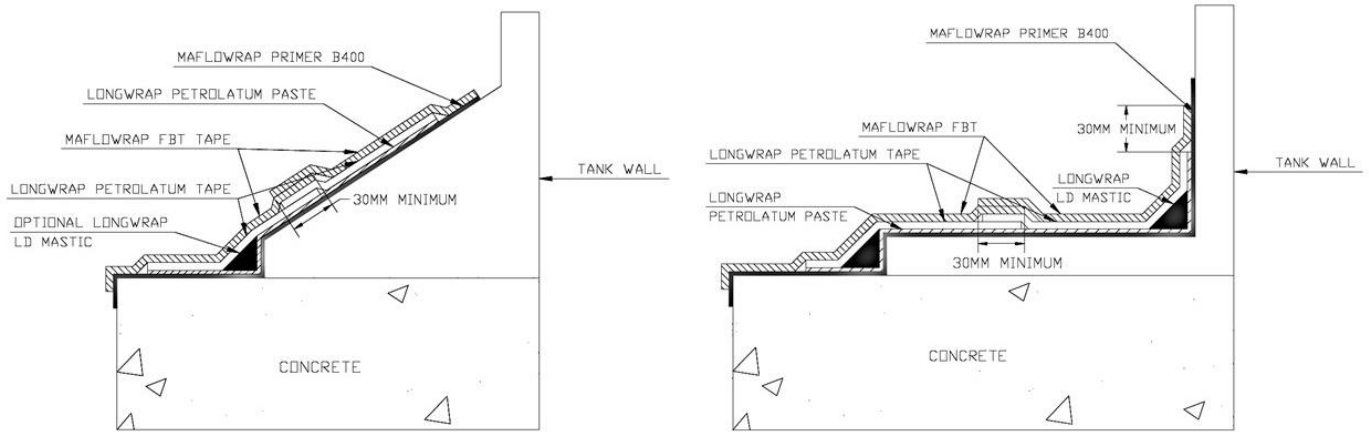
4.4.1 Apply Maflowrap FBT along the bottom of the tank chime with the tape extending a minimum of 30mm past the edge of the petrolatum coating. Use a hand roller to apply strong pressure to ensure good adhesion and remove all bubbles.

Take care to keep the fabric surface free of petrolatum wax. Contamination of the fabric with petrolatum can affect the wetting and adhesion of some liquid coatings.

4.4.2 Apply a second layer of Maflowrap FBT overlapping the first piece by a minimum of 30mm. This layer of Maflowrap FBT should also extend a minimum of 30mm past the top edge of the petrolatum coating. Use a hand roller to apply strong pressure to ensure good adhesion and remove all bubbles.

If it is not possible to extend the second wrap of tape 30mm past the edge of the petrolatum, additional wraps of Maflowrap FBT should be applied until the tape extends

a minimum of 30mm past the edge of the petrolatum. All overlaps between pieces of Maflowrap FBT should be a minimum of 30mm.



4.5 Liquid Applied Industrial Coating

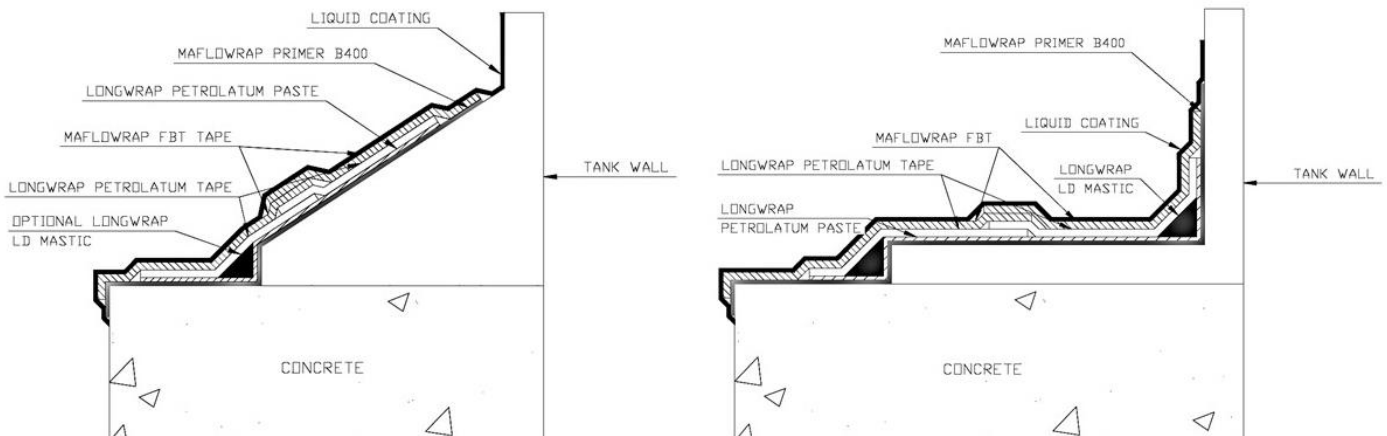
4.5.1 A liquid applied industrial coating is required to protect the system from UV and other physical and environmental effects.

4.5.2 All liquid coatings should be tested by the specifier or applicator for compatibility with Maflowrap FBT prior to use.

4.5.3 Apply the desired liquid coating by brush, roller, or spray according to the manufacturer's guidelines.

4.5.4 Some liquid coatings may require multiple coats to fully seal the fabric. Follow the coating manufacturer's guidelines for application of additional coats.

4.5.5 Maflowrap FBT is designed with a dry edge of fabric to prevent staining of the liquid coating along the tape seams. To fully seal this dry edge of fabric, it may be



necessary to apply an additional coat of liquid coating along tape edges and seams.

5.0 REPAIR OF DAMAGED COATING

5.1 All damaged and loose coating must be removed. If this removal results in the metal surface becoming visible it must be prepared as discussed in Section 3 and a primer must be applied as discussed in Section 4.

5.2 If the petrolatum layers are damaged, cut back the Maflowrap FBT to fully expose the damaged area. Apply a patch of Longwrap Petrolatum Tape which extends a minimum of 25mm past the edge of the damaged area in all directions.

5.3 Apply a patch of Maflowrap FBT over the damaged area which extends a minimum of 30mm in all directions past the edge of the damaged area.

5.4 Apply liquid coating to the patched area according to the coating manufacturer's guidelines.

The information contained here is provided for product selection purposes only and is not to be considered specification or performance data. Under no circumstances will the seller be liable for any loss, damage, expense, or incidental or consequential damage of any kind arising in connection with the use or inability to use its product. Specific conditions of sale and Chase's limited warranty are set out in detail in Chase Corporation Terms and Conditions of Sale. Those Terms and Conditions are the only source that contain Chase's limited warranty and other terms and conditions.

Chase Protective Coatings Ltd
Harbour Road,
Rye, East Sussex, TN31 7TE, UK

Phone: +44(0) 1797.223561
Fax: +44(0) 1797.224530
www.chasecorp.com

A BS EN ISO 9001:2008
REGISTERED COMPANY

Chase Corporation
295 University Avenue
Westwood, MA 02090

Phone: 800-323-4182
Fax: 781-332-0701
www.chasecorp.com

A BS EN ISO 9001:2008
REGISTERED COMPANY